

Upgrading our wastewater pipe

The Bothamley Park sewer runs along the length of Bothamley Park and collects wastewater from Aotea, Ascot Park, Waitangirua, Cannons Creek, and Rānui.

The majority of the pipe was built and installed in the 1950s and 1960s and takes raw sewage from eastern Porirua and parts of Aotea to the wastewater treatment plant in Titahi Bay.

When it rains, stormwater gets into the pipes. When this happens,

untreated sewage overflows from manholes and runs into our waterways. It is estimated that 40,000m³ of untreated wastewater overflows into Kenepuru Stream in a typical year. That's enough to fill 16 Olympic swimming pools!



We have investigated different options to help reduce overflow of untreated sewage into waterways in eastern Porirua. One way we can achieve this is by replacing the Bothamley Park wastewater pipe with a newer, larger one.

Timeline

August – September 2021

Consult with community about new wastewater pipe

September – October 2021

Finalise draft design for wastewater pipe

November 2021

Share design and plans with community and invite feedback

November 2021 – early 2022

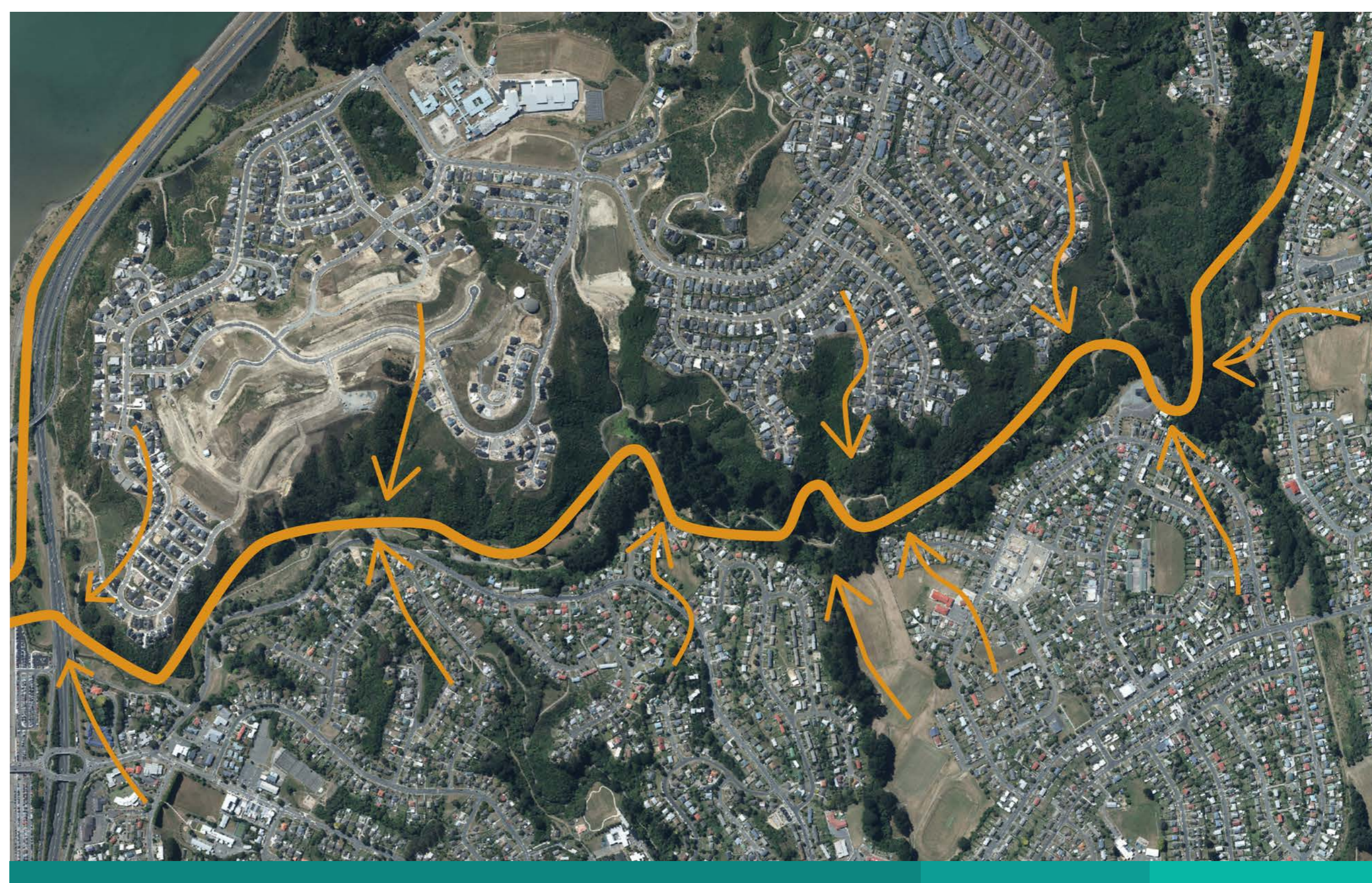
Finalise design of wastewater pipe

Early-mid 2022

Apply for resource consent

Late 2022 – early 2023

Start construction



Share your thoughts

We'd love to know what you think about upgrading Bothamley Park wastewater pipe and how we can minimise disruption.

To learn more and share your thoughts scan QR code or visit poriruadevelopment.co.nz/parksproject



SCAN ME

Let us know what you think